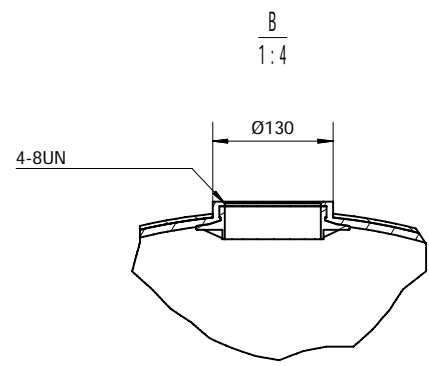
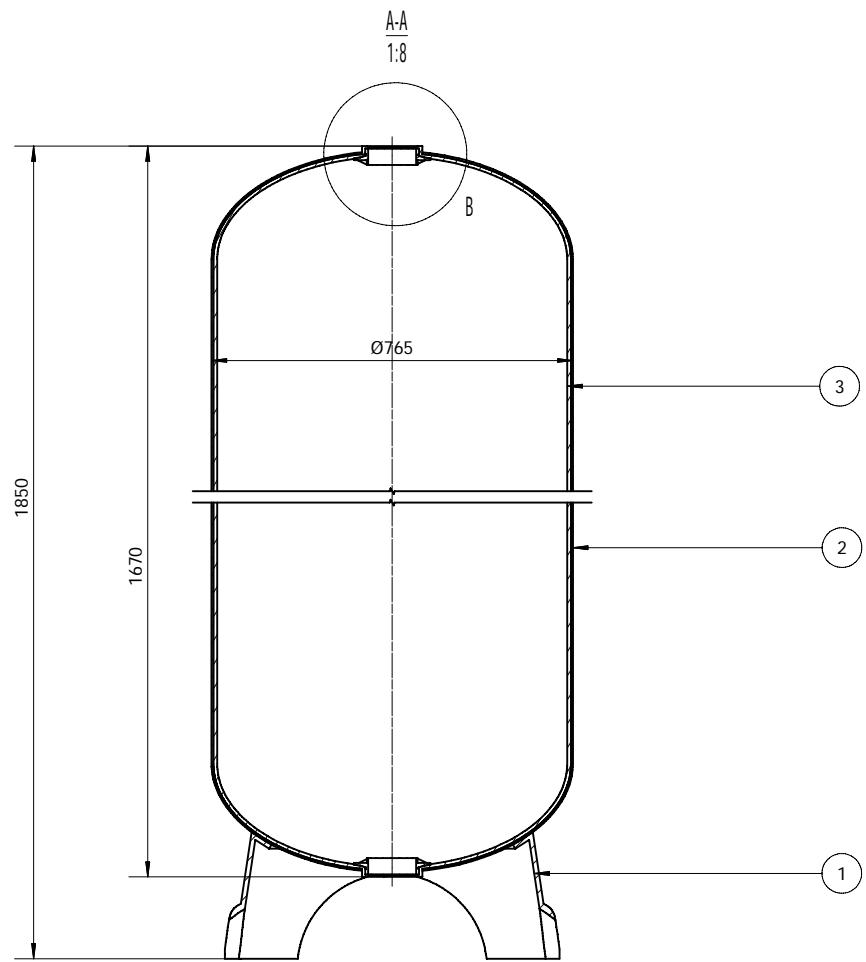
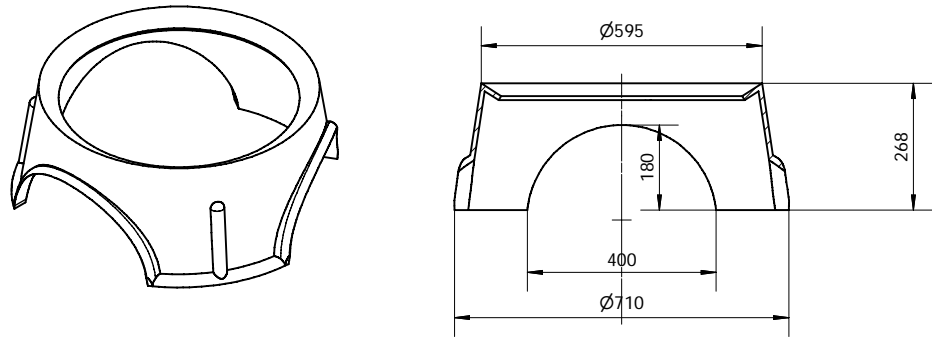


Model	Height	Vol	Weight
3072-4T4B	1850 mm	640L	



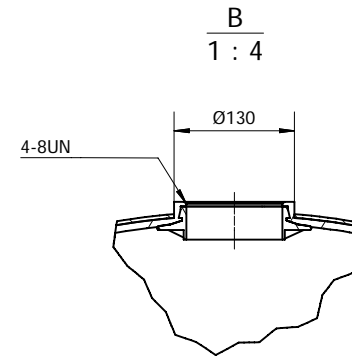
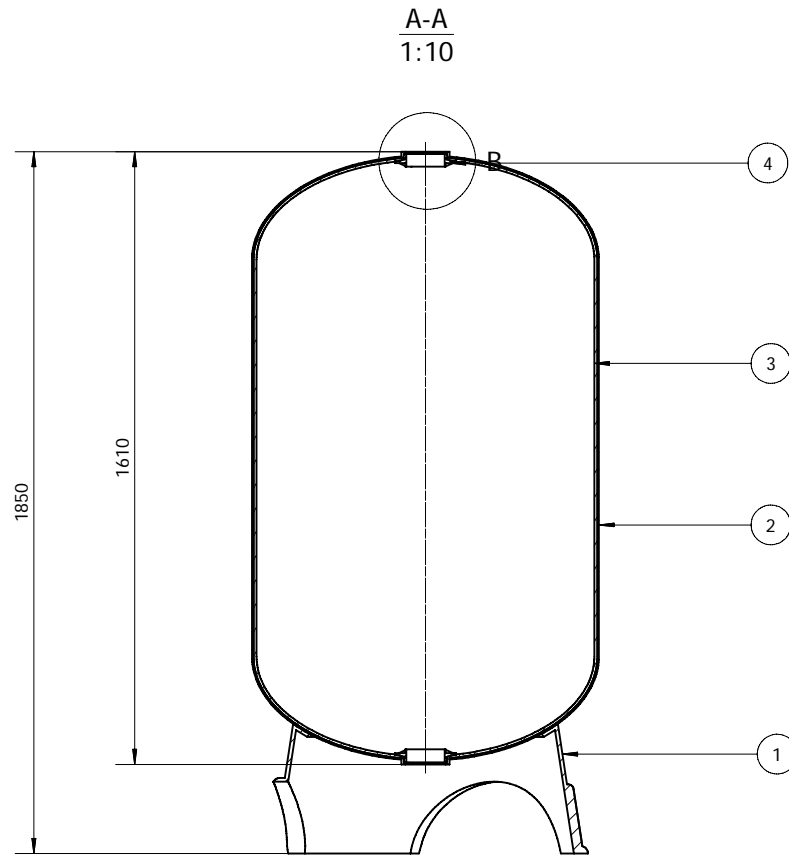
- NOTES:**
1. Inner shell - Polyethylene (PE) seamless one-piece tank liner
 2. Outer shell - Continuous strands of fiber-glass with high strength epoxy resin
 3. Bottom base - FRP reinforced tripod base
 4. Opening - 4 inch thread opening
 5. Tanks meet all applicable specification of NSF/ANSI 044 standard
 6. Operating Specifications:
 Maximum Working Pressure : 150 PSI (1.0MPa)
 Temperature : 1-49 C (34-120 F)
 Maximum Vacuum: 127mm Hg(5"Hg)
 7. Liner inspection
 No more than 20 internal 、 external blemishes、 burnt debris
 No internal 、 external blemishes、 burnt debris larger than 5 *5 mm
 8. Surface finish
 9. Surface to be free of resin, glass,nicks,barbed filament
 10. Tank to be bonded to base
 11. The base to be level correction
 12. Top and bottom opening to be parallel,top opening to be parallel with the base



4	Thread	2	LLDPE	
3	Liner	1	PE	
2	Outer sheel	1	FRP	
1	Base	1	FRP	
项目	名称	数量	材料	注释

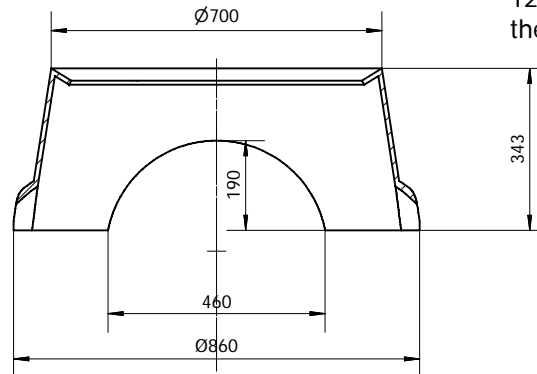
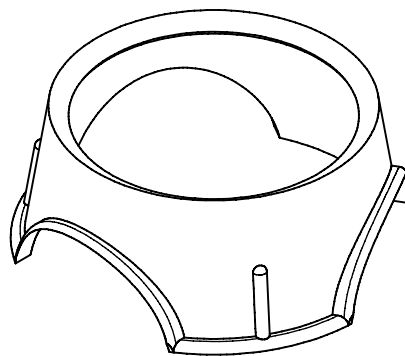
江苏开能华宇环保设备有限公司							
标记	处数	分区	更改文件号	签名	日期		
设计	张新华	2014/3/4	标准化				
审核							
工艺			批准				
阶段标记					重量(Kg)	比例	3072-4T4B
本图尺寸均以mm计，图中尺寸请勿量取。							

Model	Height	Vol	Weight
3672-4T4B	1850 mm	850L	



NOTES:

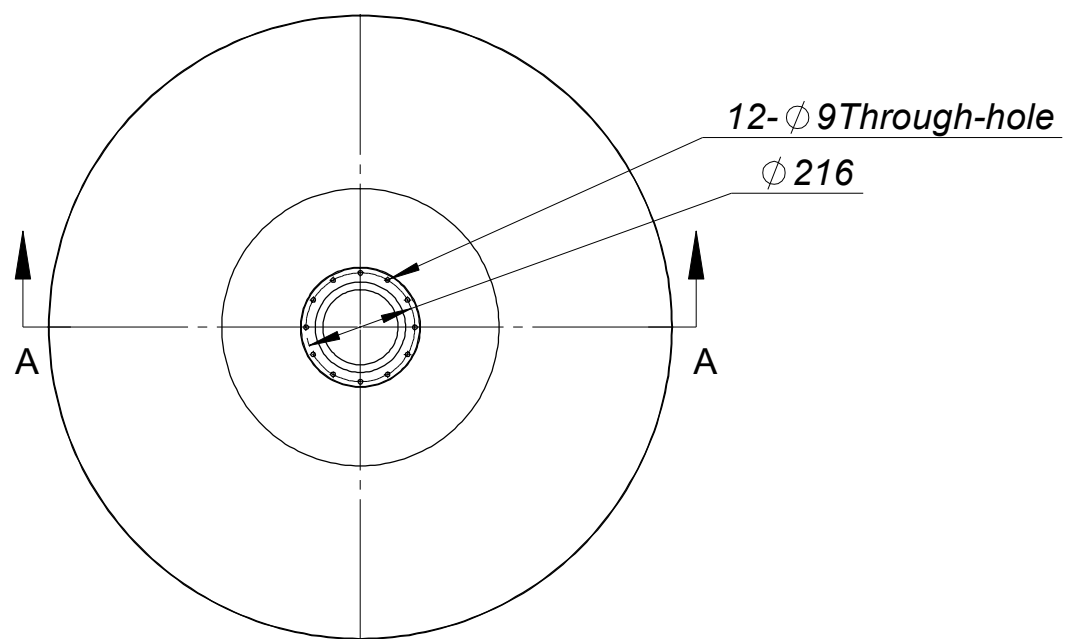
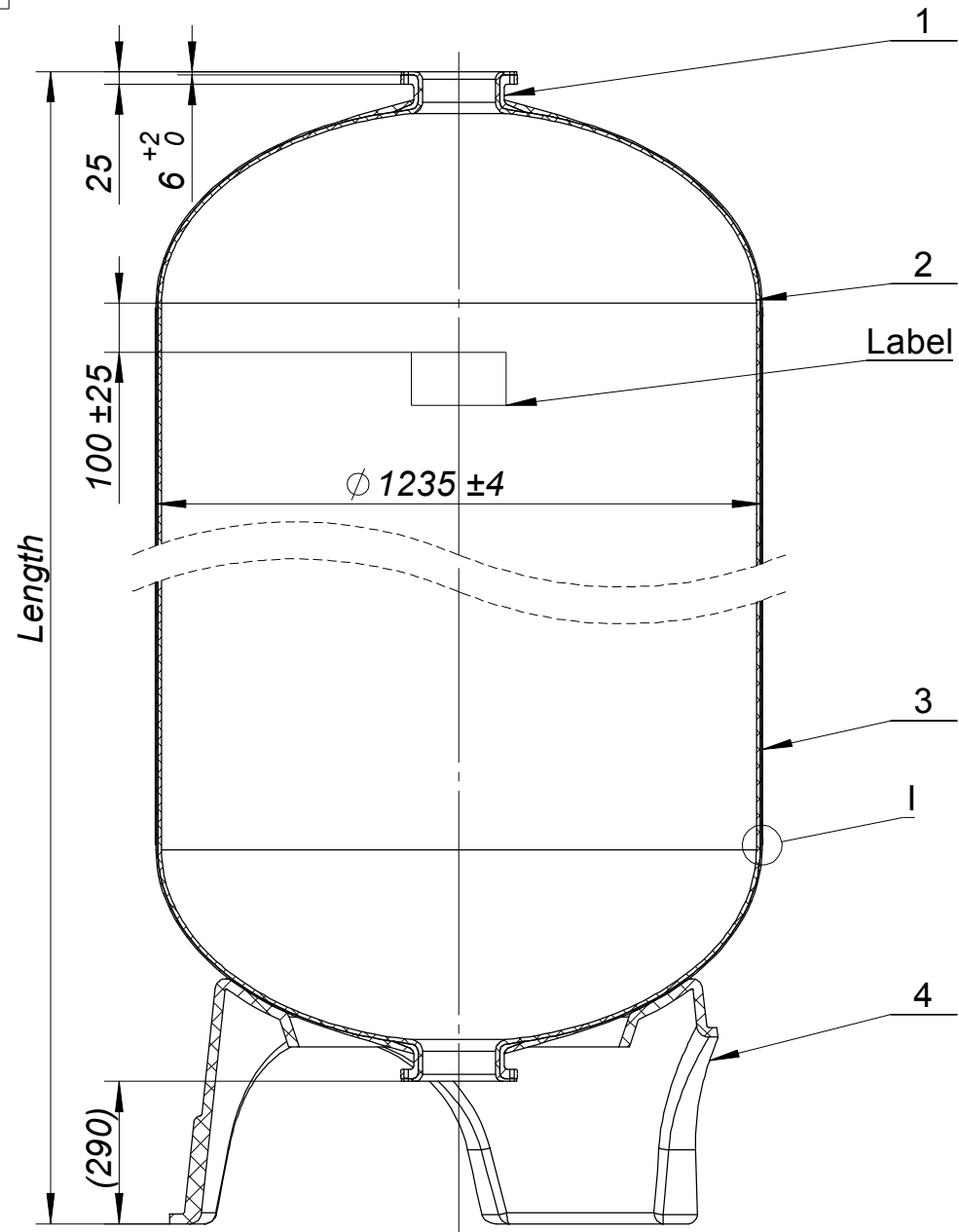
1. Inner shell - Polyethylene (PE) seamless one-piece tank liner
2. Outer shell - Continuous strands of fiber-glass with high strength epoxy resin
3. Bottom base - FRP reinforced tripod base
4. Opening - 4 inch thread opening
5. Tanks meet all applicable specification of NSF/ANSI 044 standard
6. Operating Specifications:
 Maximum Working Pressure : 150 PSI (1.0MPa)
 Temperature :1-49 C (34-120 F)
 Maximum Vacuum:127mm Hg(5"Hg)
7. Liner inspection
 No more than 20 internal 、 external blemishes、 burnt debris
 No internal 、 external blemishes、 burnt debris larger than 5 *5 mm
8. Surface finish
9. Surface to be free of resin, glass,nicks,barbed filament
10. Tank to be bonded to base
11. The base to be level correction
12. Top and bottom opening to be parallel,top opening to be parallel with the base



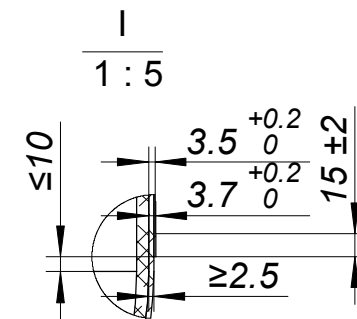
项目	名称	数量	材料	注释
4	Thread	2	LLDPE	
3	Liner	1	PE	
2	Outer sheel	1	FRP	
1	Base	1	FRP	

明细栏					
标记	处数	分区	更改文件号	签名	日期
设计	张新华	2014/3/8	标准化		
审核					
工艺			批准		
					阶段标记
					重量(Kg)
					比例
					3672-4T4B

本图尺寸均以mm计，图中尺寸请勿量取。



Data sheet									
MODEL	Length			Volume		Weight		Thickness of fiberglass shell(mm)	Hardness of surface (HBa)
	mm	+/-	inch	Liters	CU.Ft	KG	LBS		
48X72	2400	15	94.5	1950	68.9	110	242	3.3+0.2/0	≥36

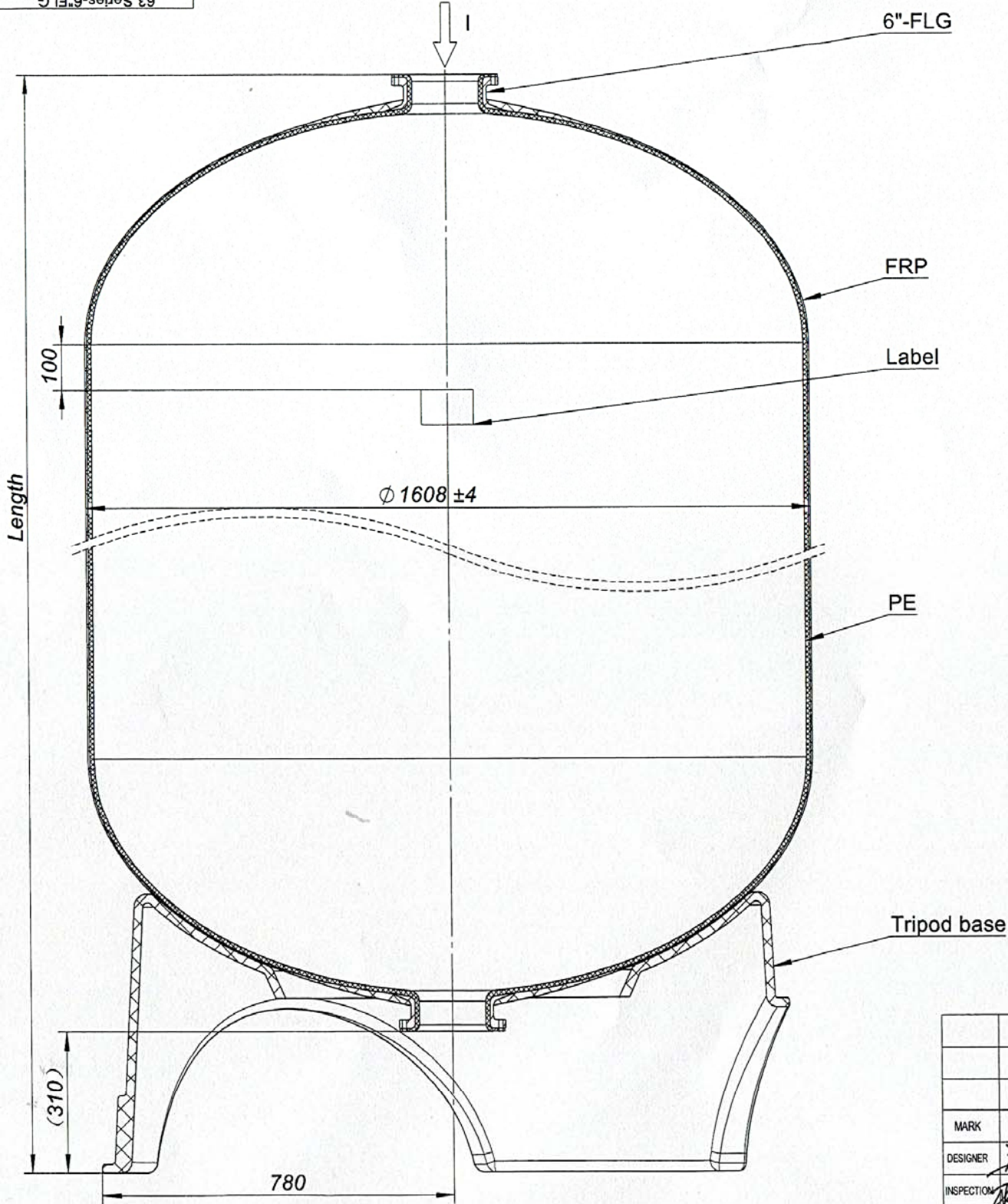


NOTES:

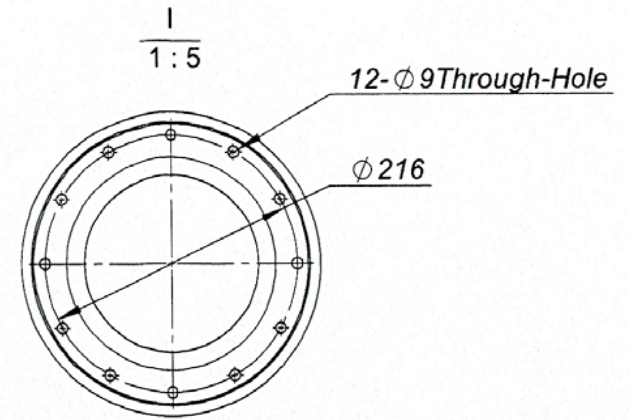
- TANK MUST MEET ALL APPLICABLE SPECIFICATIONS OF NSF/ANSI 044 STANDARD, LATEST REVISION.
- OPERATING SPECIFICATIONS:
 - A. MAXIMUM WORKING PRESSURE - 150PSI (10.5BAR)
 - B. TEMPERATURE RANGE - 34-122°F (1-50°C)
 - C. MAXIMUM VACUUM - 5.5"Hg (140mm Hg)
 - D. MEDIA - WATER
- TEST REQUIREMENT
 - A. BURST PRESSURE TEST: 4.2MPa
 - B. CYCLIC PRESSURE TEST: 1.05MPa / 100,000 CYCLES
 - C. HYDROSTATIC PRESSURE TEST: 2.52MPa / KEEP 15MINs
- VISUAL LINER INSPECTION
 - A. NO MORE THAN 10 INTERNAL OR EXTERNAL BLEMISHES OR BURNT DEBRIS.
 - B. NO INTERNAL OR EXTERNAL BLEMISHES OR BURNT DEBRIS LARGER THAN 3 x 3mm
 - C. NO INTERNAL BLEMISHES OR BURNT DEBRIS ALLOWED
- ALL GLASS STRANDS FROM FIBERGLASS LINER TO BE BONDED AND COVERED
- LABEL'S POSITION CAN BE CHANGED WITH THE CUSTOMER'S REQUIREMENT.

Number	Description	Material	Standard of material	Quantity
4	Tripod	Fiberglass		1
3	Fiberglass shell	Fiberglass Epoxy-Resin	GB/T-18369 GB/T-13657	1
2	Liner	LLDPE	Q/SH 3045 101-2005	1
1	6"-FLG	Aluminum Alloy	GB/T 15115	2

								48x72-6FLG FRP pressure vessel (top and bottom)	
MARK	PCS	REV.NO	SIGNATURE	DATE	STAGE REMARK	NUMBER /SET	SCALE		
DESIGNER			STANDARD				1:15	/	
INSPECTION			AUTHORIZATION		PROJECTION		SOURCING FROM:		
TECHNOLOGIST					TOTAL PAGES:	PAGE NO.	48x72-6FLG FRP pressure vessel (top and bottom)		



MODEL	mm	inch	+/- (mm)	Liters	CU.Ft	Kg	LBS
	63x67	2025	67	15	2365	83.6	
63x86	2475	86	15	3250	115		



- NOTES:
- TANK MUST MEET ALL APPLICABLE SPECIFICATIONS OF NSF/ANSI 044 STANDARD, LATEST REVISION
 - OPERATING SPECIFICATIONS:
 - A. MAXIMUM WORKING PRESSURE - 150PSI (10.5BAR);
 - B. TEMPERATURE RANGE - 34-122 °F (1-50°C);
 - C. MAXIMUM VACUUM - 5.5"Hg (140mm Hg);
 - D. MEDIA - WATER
 - TEST REQUIRMENT
 - A. BURST PRESSURE TEST: 4.2MPa;
 - B. CYCLIC PRESSURE TEST: 1.05MPa / 100,000 CYCLES ;
 - C. HYDROSTATIC PRESSURE TEST: 2.52MPa / KEEP 15MINs ;
 - VISUAL LINER INSPECTION
 - A. NO MORE THAN 10 INTERNAL OR EXTERNAL BLEMISHES OR BURNT DEBRIS;
 - B. NO INTERNAL OR EXTERNAL BLEMISHES OR BURNT DEBRIS LARGER THAN 3 x 3mm;
 - C. NO INTERNAL BLEMISHES OR BURNT DEBRIS ALLOWED;
 - ALL GLASS STRANDS FROM FIBERGLASS LINER TO BE BONDED AND COVERED;
 - THE PERPENDICULARITY TOLERANCE OF THE TANK BODY AFTER BEING INSTALLED WITH BASE AND THE GROUND LEVEL IS <5mm;
 - LABEL'S POSITION CAN BE CHANGED WITH THE CUSTOMER'S REQUIREMENT.



							開能 CANATURE GROUP Canature	
							63 Series-6" FLG FRP Tank	
MARK	PCS	REV.NO	SIGNATURE	DATE	STAGE REMARK	NUMBER /SET	SCALE	
DESIGNER							1:10	J606367A J606386A
INSPECTION					PROJECTION			SOURCING FROM ZZ
							TOTAL PAGES:	PAGE NO
							63 Series-6" FLG	